

Moraine Environmental, Inc.
Environmental Management Services

1407 7th Avenue Garden, WI 53024-1024
(262) 779-9600 or (262) 877-9770

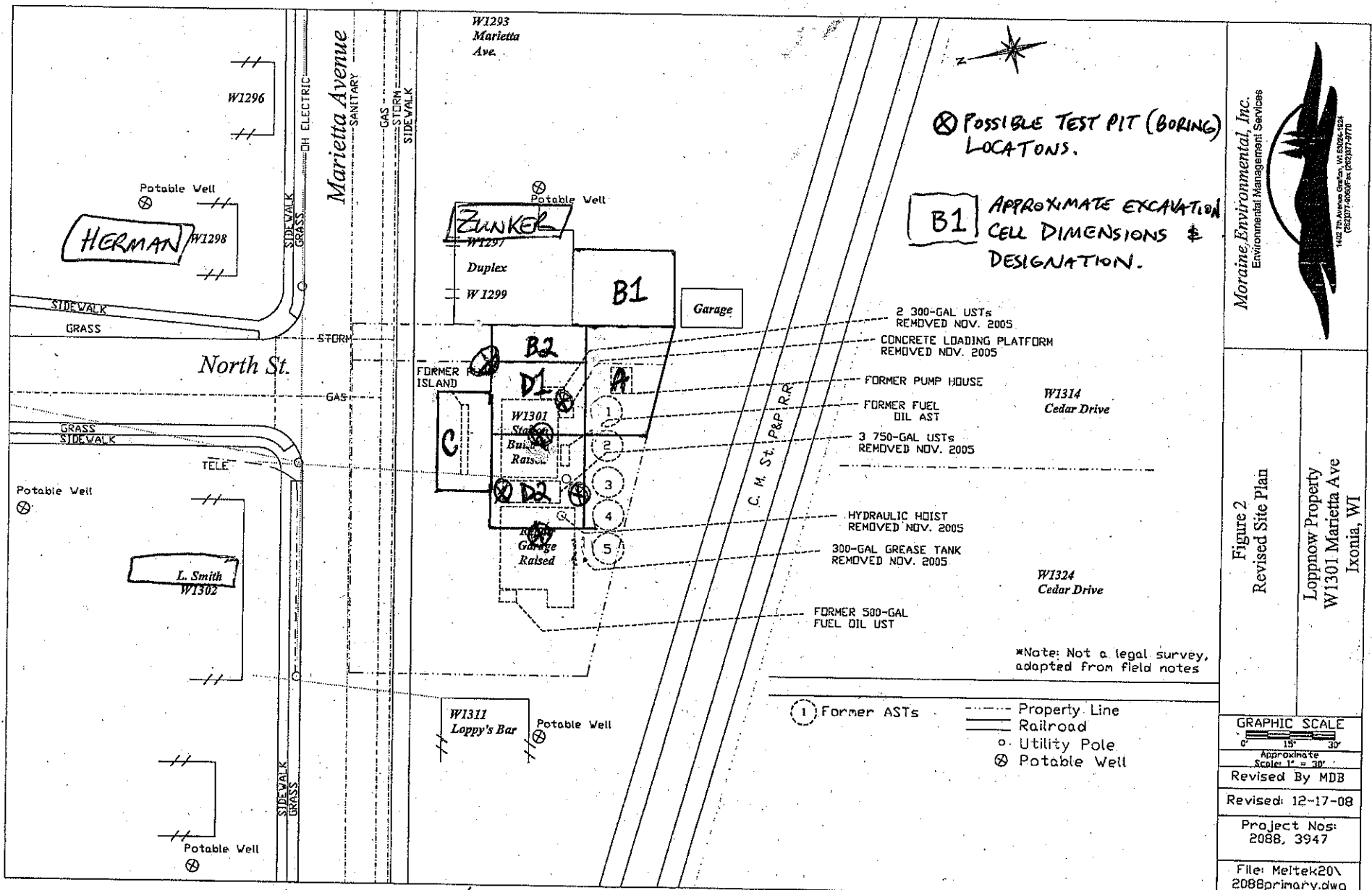
Figure 4
Soil Boring and Well Location Plan
Loppnow Property
W1301 Marietta Ave
Ixonia, WI

*Note: Not a legal survey, adapted from field notes

- Legend**
- ① Former ASTs
 - Property Line
 - Railroad
 - Utility Poles # *less inner line*
 - ⊗ Potable Well
 - ⊕ Soil Boring
 - ⊙ Monitoring Wells
- MW1-MW6 Completed July 1997
MW7, TW8 & PZ1 Completed July 2002
MW8-MW11 Completed Feb. 2006
TW13-TW20 Completed Jan. 2008
MW12 Completed Jan. 2008

GRAPHIC SCALE	
0	15' 30'
Approximate Scale: 1" = 30'	
Revised By MDB	
Revised: 9-4-08	
Project Nos: 2088, 3947	
File: Meitek20\2088primary.dwg	

MODIFIED BY COMMERCE/DNR 2009



Moraine Environmental, Inc.
Environmental Management Services



1402 7th Avenue Carlson, WI 53002-1824
(262) 777-6868 Fax: (262) 777-9770

Figure 2
Revised Site Plan

Loppnow Property
W1301 Marietta Ave
Ixononia, WI

⊗ POSSIBLE TEST PIT (BORING) LOCATIONS.

B1 APPROXIMATE EXCAVATION CELL DIMENSIONS & DESIGNATION.

*Note: Not a legal survey, adapted from field notes

MODIFIED BY COMMERCE/DNR 2009