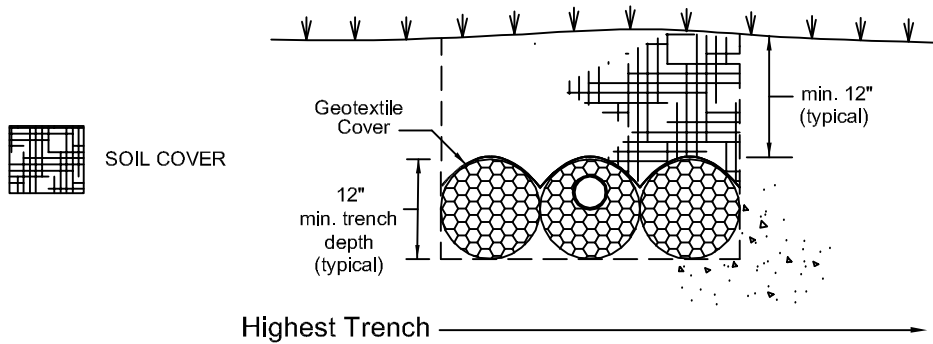


IN-GROUND DOSED-GRAVITY DISPERSAL AREA

Stepped Elevation Trenches with EZ1203HP Bundles

3-ft Trench (down-sizing credit)



TYPICAL TRENCH CROSS SECTION VIEW
(No Scale)

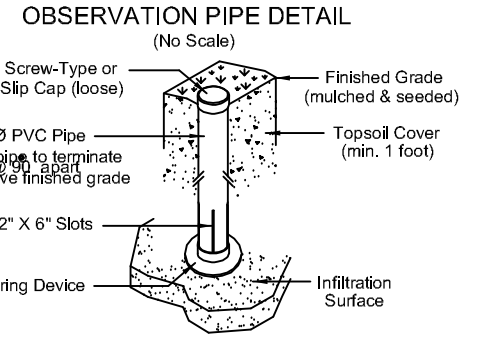
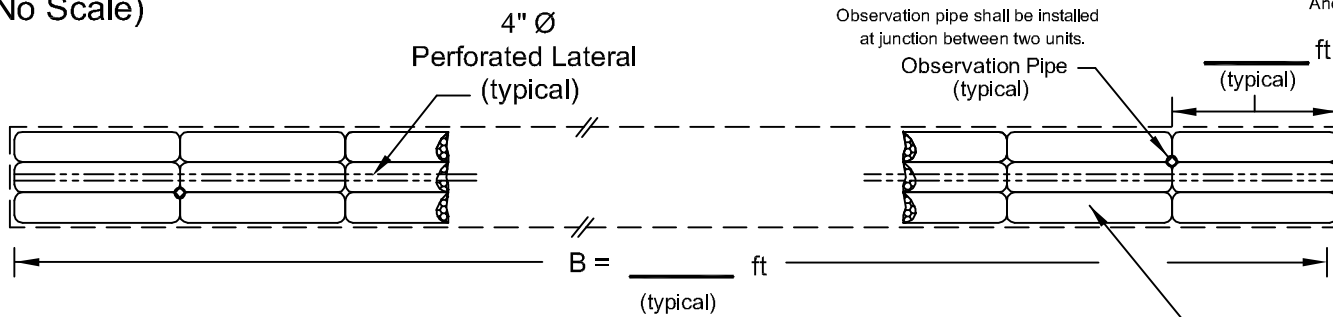
Provide minimum 3 ft separation between trenches.

System Elevations = _____ ft; _____ ft; _____ ft; _____ ft; _____ ft

Highest Trench → Lowest Trench (as applicable)

TYPICAL TRENCH PLAN VIEW
(No Scale)

(Show location of inlet / outlet pipe connection on plan view.)



OBSERVATION PIPE DETAIL
(No Scale)

A = 3.0 ft
(typical)

INSTALL PER TRENCH:

_____ 10-ft bundles @ 50 ft² EISA/unit = _____ ft²

+ _____ 5-ft bundles @ 25 ft² EISA/unit = _____ ft²

= Proposed EISA per trench = _____ ft²

EZ1203H Bundle
(typical)
(mfd by Infiltrator Systems, Inc.)
Install pursuant to manufacturer's instructions.

Required Infiltration Area = _____ ft²

Distribution Method: _____

x _____ trenches = Proposed Total EISA = _____ ft²