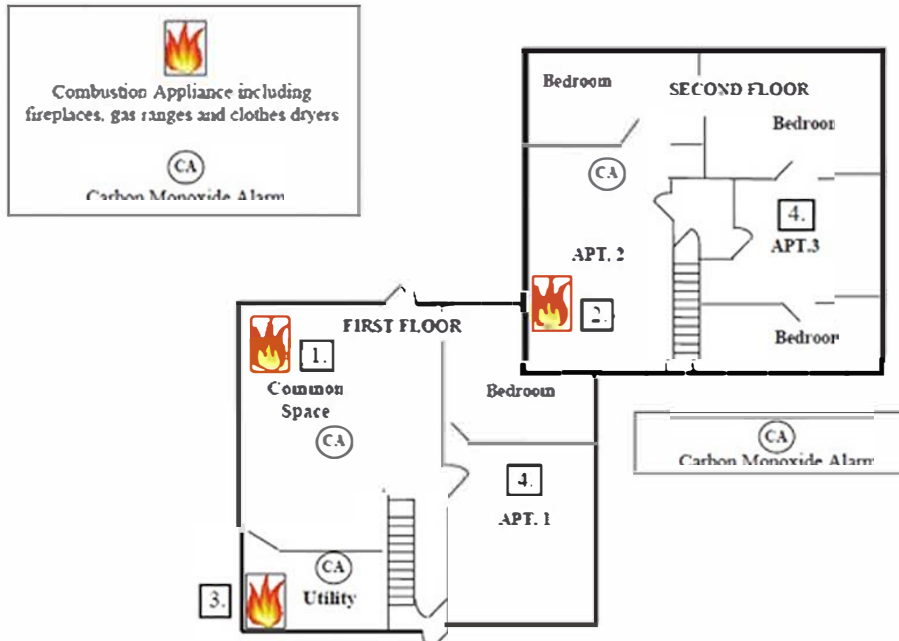


# Minimum Carbon Monoxide Detector Locations

Multi-Unit Residential Buildings  
 Consult Code SPS 362.0915  
 June 12, 2018



**Notes:**

1

**Fuel-Burning Appliance Outside of the Unit (Example: Gas Fireplace):**

A carbon monoxide detector is not required in the Unit when a carbon monoxide detector is provided on the ceiling between the fuel-burning appliance and the Unit.

2

**Fuel-Burning Appliance (Example: Gas Stove):**

A carbon monoxide detector shall be provided in the unit that contains a fuel-burning appliance and shall be located in the immediate vicinity of the sleeping room.

3

**Forced Air Furnace**

A carbon monoxide detector is not required in a Unit if a carbon monoxide detector is provided in the first room or area served by each main duct leaving the furnace and one of the following is satisfied:

1. → The carbon monoxide alarm signals are automatically transmitted to all units served by the furnace and to a designated location at a facility staffed by trained personnel on a continuous basis where alarm and supervisory signals are monitored, and facilities are provided for notification of the fire department.
2. → In addition to the first room or area served by each main duct leaving the furnace, a carbon monoxide detector is installed in every 4th unit on the same floor as that first room or area.

4

**Apartment No's. 1 and 3** do not require carbon monoxide detectors because they do not have any combustion appliances.